

Newsletter

Table of Contents

Click Title to Jump to Section

- [1 Letter from the Board President](#)
- [3 WBCP: Our Culture of Volunteerism](#)
- [4 Community Psychoanalysis Certificate Program](#)
- [5 The Unseen: Deepening Explorations in Psychoanalysis](#)
- [6 The Ombuds Committee](#)
- [7 Website Frequently Asked Questions](#)
- [8 A Message from the Treasurer](#)
- [9 Information About Continuing Education](#)
- [10 New Directions Personal Essay](#)
- [11 Member Announcements](#)
- [12 PSP 1 New Student Profiles](#)
- [16 2023 Graduation & Awards Photos](#)

Fred Pisoni, Newsletter Editor
Joe Chirico
Brittany Smith
Timothy Ellsworth
Suzanne Haddad

Send any newsletter comments or suggestions to
fpisoni@aol.com

Update from the Board

Letter from the Board President



Dear All,

On September 12, I wrote to you welcoming everyone back after the summer recess, highlighting some of the progress that the Board and Institute committees, and the administration were making quietly during the summer. Since that time, classes have begun, and our programs have resumed for the Fall. In this current edition of our biannual Newsletter, you can read about several initiatives, upcoming programs, and the exciting work that continues throughout our Center.

Please take a few moments to peruse the photos of our new PSP1 class members and read their brief bios. Each year we have been impressed

by how accomplished our students already are. This year is no exception as they join the accomplished PSP2 cohort and our candidates who are in analytic training. As faculty and supervisors, we hope to deepen their knowledge of psychoanalytic psychotherapy and their skills in psychoanalytic technique as we introduce them to multiple lenses from which to engage their patients in this work that we call psychoanalytic psychotherapy and psychoanalysis. We strive to do this respectfully and incorporating and addressing diversity in its many shapes and forms. On October 15, there was a welcome reception for all our trainees and several of our faculty. We hope to have many more such receptions throughout the year so that members and students can meet each other in person prior to our Graduation and Awards Ceremony in June. If you were not invited to the first one, do not despair. We will try to include more faculty and members in the upcoming months.

Our Membership Committee has announced in person get-togethers for our

members as well as Zoom meetings so that we can feel more connected to one another, even as Covid threatens to dampen these attempts. Keep an eye out for these emails and invitations.

David Cooper has written about the Ombuds Committee and their work over the summer to move this initiative to a working, functioning committee that is ready to be utilized should we need to do so. The committee members edited the document making it a cleaner, clearer, and more readable document. It will be added to the website once our lawyers at Hogan and Lovell have vetted it. The committee voted for David as chair and he has graciously accepted the position. Raquel Adams has similarly graciously agreed to be Deputy Chair. With much gratitude, thank you both. Our new deans, Anne Adelman and Terri Judge have also been meeting, trying to do the same for their new positions. I believe you will be hearing more from them soon.

Our Treasurer, Cary Gold, has written a short piece clarifying a question he and the Board are often asked: If we have such a large endowment, why can't we reduce dues, tuition, the cost of programs, etc.? We are fortunate to have the Mellon bequest to keep us running, but Cary clarifies the confusion around this bequest and spells out the restrictions mandating its use for supporting the operating costs of our Center.

Debbie Feldheim and Joy Kasset have been approved by the Board to develop a Community Psychoanalysis Certificate program that will be housed under the Program Management Committee. They plan to have it up and running for the first cohort next September. The certificate program that Debbie and Joy write about is the culmination of several years study, and we are very excited to sponsor this new program. Please read about the future of psychoanalysis and its expansion into the social.

Lizbeth Moses has been working tirelessly with the American Psychoanalytic Association Department of Psychoanalytic Education (DPE) and the Psychoanalyst in the

Community group to develop a magnificent conference slated for March 16-17: The Unseen: Breaking Barriers, Building Bridges, and the Future of Community Psychoanalysis. The keynote speakers are Francisco J González, MD, Kimberlyn Leary PhD., ABPP, and Daniel Gaztambide, PsyD. Along with several other Centers who are leading the charge in community psychoanalysis, we will also be co-sponsoring this hybrid conference. It looks to be a fabulous opportunity. Please read Lizbeth's article on this conference!

Several persons in leadership have signed up for Balint Group Leadership Training next month as we try to better address issues that arise in classes and in other large and small group settings, and within the organization as a whole. We will report back to you about this training. In addition, the Community Psychoanalysis Certificate program plans to make Balint groups a cornerstone of their work. More on this initiative after this training has occurred.

Finally, please take the time to read about these and other initiatives and focuses within the Center. Terri Judge recognizes our many volunteers and encourages every member to participate. We have so many excellent, ongoing programs, and we depend on our volunteers' generosity. Within the Board and the Institute, we have a mandate to make the Center a more equitable, welcoming, and respectful Center. Please reach out to me and/or others in leadership, if you have ideas of how to do so. We welcome your ideas and your perspectives and genuinely want to know how we are doing addressing issues - what we are doing well and what we need to improve on.

To borrow an important phrase: Together we can! I/we mean that. I/we welcome you, your ideas, and your help.

Yvonne De Cuir,
President, WBCP Board

WBCP: Our Culture of Volunteerism

The WBCP is a dynamic and highly productive organization. The array of our activities is truly astonishing, given our size. Some are longstanding, while others are recent, or brand new. Because we have so many activities, our members often hold multiple roles and contribute countless hours to keep it all running. There are too many individuals to name, and it is hard to acknowledge and thank all who deserve our appreciation. Instead, I am recognizing programs and committees below and expressing gratitude for all who serve in these many ways.

Under the Program Management Committee, we currently operate no less than 13 active programs. The chairs, committees, and faculty that power these programs are the outward face, as well as the lifeblood of our Center. The PMC houses the Psychoanalytic Fellowship, New Directions, Couples and Family Therapy Training, the Baltimore Film Series, the DC Film Series, the Scientific Meetings Program, which orchestrates four annual conferences, the Washington Area Case Conference, the Clinical Psychotherapy Program, the Study Group Program, the Observational Studies Program, the Research and IRB Program, and the Referral and Consultation Service.

The WBCP Board of Directors is composed of dedicated volunteers, from among our membership and the wider community. The Board committees provide the structure, and perform many critical functions for our organization. These include the Membership Committee, the Community Outreach Committee, the Ethics Committee, the Colleague Assistance Committee, the Ombuds Committee, the Diversities Committee, the Diversity Task Force, the Finance Committee, PsychBytes, and the Scholarship Committee.

Our commitment to training is centered in the Institute, where faculty, advisors and supervisors devote themselves to psychoanalytic education. Faculty as well as students play vital roles in shaping the educational experience for our future psychoanalysts and psychoanalytic psychotherapists by serving together on many committees including the Admissions, Recruitment, Curriculum, PSP Steering Committee, Faculty and Program Evaluation, Faculty Development, Distance Education, Student Progress Committee, Candidates

Progress Committee, Supervising and Training Analyst Development Committee, and Child and Adolescent Psychoanalysis Committee.

Outside of the Center we are proud to be affiliated with esteemed institutions like George Washington University, Howard University, Georgetown University, Children's Hospital, St Elizabeths, Sheppard Pratt and University of Maryland. Our instructors and supervisors from WBCP generously donate their time to teach and train in these local programs, seeding interest in psychoanalytic ways of thinking and working in the broader community.

At WBCP, we are, in essence, an army of volunteers, and our community thrives because of the passion, dedication, and generosity of our members. Our programs and initiatives are ambitious, but those who become involved find the opportunities for professional growth, meaningful connections, mentorship, and leadership to be highly rewarding.

Among all of these roles, some require full membership, such as chairing programs and committees, supervising, and teaching. However, many roles are open to Basic members and Friends. Students and candidates, as full members are involved at many levels. We wholeheartedly encourage anyone interested in becoming more involved to say "yes" and jump in. If you are not sure what you might like to do, or how to become more involved, please do not hesitate to reach out to any of the WBCP leadership to express your interest. We will help you find a fulfilling role.

The WBCP community is a collection of dedicated members bound by our common passion for psychoanalysis, and lifelong learning. We extend our deepest gratitude to our member volunteers for their invaluable gifts of time and energy. We encourage everyone to take advantage of the many opportunities that await you.

Terri Judge, Ph.D. (she/her)
Vice President of Education

Little Musical Gift from IPA

Good Hope Marimba Band: Vivaldi

Click Here

Community Psychoanalysis Certificate Program (the CPCP)

A New Program at the WBCP

The Community Psychoanalysis Study Group and Task Force is excited to announce the inception of a new one-year program, the Community Psychoanalysis Certificate Program, which is slated to start September 2024. Over the past three years, we have met monthly to share our community experiences. We have also connected with other psychoanalytic teaching programs, attended various conferences, and met with potential partners from local and international community agencies.

A pivotal aspect of the CPCP is group work, which we believe is crucial for community involvement and amplifies its impact. We have decided to use the Balint method as the model framework for the group activities. To ensure we are providing the most effective training, we have liaised with leaders from the American Balint Society (ABS), and as a result, some of our faculty will be participating in the Balint Leadership Training Course in Pittsburgh in November. Additionally, several of us will be participating in online Balint groups, also facilitated by the ABS

The program will be focused on learning how to apply psychoanalytic principles in a community setting. It will consist of 2 sessions per month: one didactic class and one experiential Balint group session. Alongside, we have established several local and international community placements (either in person or by Zoom) that will be an integral part of the training, including St Ann's Center for Children, Youth & Families, Jubilee JumpStart, YouthXYouth, and Learn Serve International.

Our initial intake targets will be licensed mental health clinicians from the DMV and Baltimore regions. Given our utilization

of online platforms and the potential for virtual service placements, we foresee an expansion of our recruitment efforts both nationally and internationally. In a possible second year to the program, we are considering running several Balint groups led by program alumni to keep graduates connected and engaged with our program and the Center.

As we eagerly anticipate the launch of the CPCP, we recognize that the inaugural year will be a phase of learning and refining. This unique program will establish our Center as an innovator and leader in the growing national and international involvement in community engagement and social justice by psychoanalytically oriented clinicians and organizations. Importantly, it also profoundly aligns with our Center's mission and our DEI initiatives.

Further details will be available on our website and through the listserve later this fall. Anyone interested in participating in the program, joining our steering committee or faculty, becoming a supervisor, learning how to run a Balint group or creating another service placement, please contact us. We have so much to learn from each other.

Deborah Feldheim and Joy Kasset,
Co-chairs

Little Musical Gift from IPA

The Song of the Birds, Pablo CASALS, Julie

Sévilla Fraysse

[Click Here](#)

The Unseen

Deepening Explorations in Psychoanalysis



The American Psychoanalytic Association's Department of Psychoanalytic Education (DPE) and the Psychoanalyst in the Community working group are excited to announce an upcoming conference called The Unseen: Breaking Barriers, Building Bridges: Community Psychoanalysis into the Future. The conference will take place on March 16 and 17, 2024, in Washington, DC. It will be a hybrid in-person and online gathering.

Our featured speakers--Daniel Gaztambide, Psy.D., Francisco Gonzalez, MD, and Kimberlyn Leary, Ph.D.--will together explore the intersection of the personal and social unconscious and how psychoanalysts can be engaged in the socio-political world. The overarching objective of the conference is to facilitate a liminal space for participants to consider moving from the solitude of their consulting rooms, where the individual unconscious holds sway, to a space where the individual and communal unconscious are in dialogue about contemporary societal crises. Throughout the conference, we aim to build a collective consciousness, both intellectually and experientially, thereby expanding the horizons of psychoanalytic possibilities.

Utilizing small-group and large-group experiences, we will create a framework for personal and interpersonal learning. We will screen "We Are Human First," a film produced by psychoanalyst Paula Kliger, Ph.D. The film presents a collection of human atrocities and suffering, serving as a catalyst for deeper conversations about the potential of psychoanalytic applications to contribute beyond the consulting room. Throughout the conference, participants will have the opportunity to share personal reflections about pressing mental-health and public-health challenges.

The conference is co-sponsored by several collaborating institutions, including the Boston Psychoanalytic Society and Institute, the Contemporary Freudian Society, the Psychoanalytic Institute of Northern California (Community Psychoanalysis Track), the Oregon Psychoanalytic Center, and the Washington Baltimore Center for Psychoanalysis.

Generous support from DPE and other sponsors has enabled us to create a joint event that deepens the connections between institutes, institute-affiliated analysts, and community-based clinicians and agencies. We hope that the conference will foster inspiration to establish more community projects in the US and abroad. US psychoanalysts who have been working in community settings nationally and internationally (Paola Contreras, Francisco Gonzalez, Jany Keat, Paula Kliger, Lizbeth Moses, Rachel Peltz and Lee Slome) joined with Colombian community psychoanalysts Camila Gutierrez Cardoso, Silvia Rivera and Maria Cecilia Sanchez to establish a

working group that developed an intimate two-day workshop called Collaborations for Working Under Fire: A Community Psychoanalysis International Working Group. We hope this group will expand and flourish by welcoming interested conference attendees.

Our ultimate goal is to extend the reach of psychoanalytic thought beyond traditional institutional and individual psychoanalytic therapy. We aim to nurture a national and international hub for creative engagement among diverse clinical practitioners, administrators, activists, artists and all those dedicated to strengthening the application of psychoanalytic thinking in the community. We also aim to encourage the establishment

of new local centers and networks. We are building our new community to help heal our separate and shared socio-political worlds.

Conference Planners: Paula Kliger, Karol Kullberg, Lizbeth Moses, Lee Slome, Thomas Veeder.

Lizbeth Moses, Ph.D.

The Ombuds Committee

While the Center's Ombuds Committee has been in the works for some time, it is now ready to begin operations. The committee consists of eleven individuals, with two each from the student body (both PSP and candidates), the Institute Council, the Program Management Committee, the Diversities Committee, and three Board members. The committee elects its own Chair and Deputy Chair, which initially will be David Cooper and Raquel Adams (formerly Carrera) respectively. The intent of forming this committee, and the procedures which govern it, is to encourage open discussions and resolutions of conflicts in the Center, with a balance between privacy and transparency. In the past this balance tilted too far in the direction of privacy, which may have led to perceptions of a veil of secrecy, fueled simmering conflicts, and led to a lack of resolution or of knowledge about what resolution has been reached.

To discuss and resolve Center conflicts, any Center member can access the Ombuds Committee via contacting one of our committee's members; alternatively, any member can choose to contact one of the

newly designated Deans (Anne Adelman for the Institute and Terri Judge for other Center programs). For information on the Deans please read the website document on Deans of the Institute and the Board and Programs ([HERE](#)). Once we have been approached with a concern/complaint, the Ombuds Committee will work first to see if informal resolution is possible. If such an approach is not successful, we have procedures in place to bring together a subcommittee of five Ombuds Committee members, aiming for one representative from each of the designated stakeholder groups, to look into the complaint and to reach a conclusion as to how to achieve resolution that addresses complainants' concerns.

We are committed to a timely process that will not extend beyond 30 days. Decisions of our group, representing various constituencies, will be final. The current committee consists of Sarah Diehl; Ira Dosovitz; Sarah Hedlund; Joy Kasset; Kerry Malawista; Erica McClaskey; Teresa Mendez; Arthur Stein; Fernando Tripodi; Raquel Adams, Deputy Chair; and David Cooper, Chair. Our procedures are posted on the Center's website ([HERE](#)). Please be aware that

these procedures have been slightly revised, and revised procedures will be posted as soon as we can get legal review/approval.

The process of conceptualizing the committee and formulating its procedures was spearheaded by the Board, and specifically by Fernando Tripodi, Board member and co-chair of the Diversities Committee, and we would not be in the position of launching it without his tireless efforts, along with the efforts and strong support of the Board. The design is intended to facilitate a climate of collaboration and improved education when it comes to missteps in the pursuit of the mission of the Center. Our

hope is that this committee of the Board will contribute to the goal of becoming a more open Center, welcoming and respectful of multiple points of view.

David Cooper, Chair
Raquel Adams, Deputy Chair

Public Website FAQ

Question: How can I access the members area of the website?

Answer: On any page on our website, WBCP.Org click the gray **Login** button on the top of the page next to the search bar. Your username is your email address. If you forget your password, you can always reset it from this page.

Question: When can I expect to receive my certificate for the continuing education course I took through WBCP?

Answer: At the end of every course each student will be issued a confidential course evaluation. Completion of the evaluation is required for the award of CME/CE. After submission of the completed evaluation students will then be awarded any earned certificate and credits. Please allow about two weeks for the issuance of CEUs.

Question: Where can I find the schedule of WBCP's upcoming programs?

Answer: Our upcoming programs calendar can be accessed by clicking [HERE](#) or via our menu by hovering over the **Public Programs** menu option at the top of the page. Then select **Calendar**.

Question: My name appears on the "Find a Therapist" page. How can I keep my information up to date?

Answer: 1. Log into your WBCP.org account

2. Click on **My Profile**.

On this page you will be able to view and edit your member profile, view any forms that you have submitted such as registrations or completed surveys, email history, and invoices.

3. The following attributes listed in your profile control what is displayed on the "Find a Therapist" page and will automatically update when modified

Address
Phone-Preferred
Specialty
Languages Spoken
Accepts Insurance
Takes Child Patients

Membership Website FAQ

Question: How do I view the information stored in my profile?

Answer: 1. Log into your WBCP.org account

2. Click on **My Profile** which is located under the chalkboard in the middle of the screen.

3. On this page you will be able to **view and edit your member profile, view any forms that you have submitted such as registrations or completed surveys, email history, and invoices.**

Question: When can I expect to receive my certificate for the continuing education course I took through WBCP?

Answer: To see if you have registered for a **program** or **completed a survey** click on **“Forms I’ve Taken”** in the blue menu bar on the **My Profile Page.**

Question: How can I view any emails and messages that I have received from the association contact center?

Answer: To find an email with a link to a survey or certificate of attendance click on **“Email History”.**

Note: *Email History only retains messages and does not retain email attachments. To locate any past attachments, please check your email inbox (Gmail, Yahoo, Outlook).*

Question: How can I view paid and open invoices?

Answer: 1. Log into your WBCP.org account

2. Click on **My Profile.**

To view paid and open invoices, click on **Invoices.**

Question: How can I search for another member of WBCP?

Answer: On the member side of the website click **Search Member Directory** in the **Quick Links** menu.

Question: I want to register for a program that offers bundled courses as well as individual courses. How can I select individual courses?

Answer: 1. On the registration page, make sure to select **Yes** to the Confidentiality Agreement

2. In the **“Choose Subscription or Individual Conferences”** section select **Individual Conferences**

3. If the **Individual Conferences** option is selected the user should see a list of the upcoming conferences.

4. To **Register** click the **“Register Yourself”** option under a ll of the conferences that the registrant would like to attend.

A Message from the Treasurer

Dear Members- I am frequently asked a version of the following question and thought that it may be useful to members that I answer it for everyone:

“Since we have a sizable endowment from the Mellon bequest, why can’t we reduce or eliminate dues and tuition?”

It is certainly a legitimate question, and the short

answer is that there are very tight restrictions on the amount of distribution allowed from this gift. However, I feel that the members are entitled to a more complete explanation.

The bequeathal states, explicitly, that in any given year the distribution from the account can be no greater than 5%. This language is commonly used in bequests of this kind. The dividends and interest that our account

produces amount to approximately 3% of the account value. That 3% number is what we budget for distribution; it is clearly not a part of the principal of the account. I use “principal” and total account value synonymously. The distribution is used with other revenue sources to fund our excellent programs, important scholarships, and to provide payroll for our extraordinary staff. While we could, in theory, distribute that other 2%, using those funds would necessitate going into the principal of the account. Therefore, I view the 2% cushion as an emergency fund that is available if needed, but it is not a resource that is automatically distributed. One does not want to diminish the principal of an investment account, unless absolutely necessary.

I am acutely aware of the numerous competing interests associated with the budgeting process. One of our goals is to keep the dues and tuition as low as possible, while continuing to fully fund current operations. At the same time we want to fully fund current operations, we do not want to do so by taking principal away from the future (the investment account) to pay for the present. Attempting to achieve the proper proportionality among these goals is a delicate balancing act which the finance committee, and the board, are constantly fine-tuning. I am quite sure we are not perfect.

In summary, I want to reassure the members that:

- Our tuition and dues are at or slightly below other psychoanalytic centers of comparable size.
- We have an adequate emergency fund.
- Our programs are fully funded and not in deficit, and our investment fund is quite well managed.
- We are in a solid financial position, but we have to remain vigilant in our budgeting and enthusiastic in our fundraising.

We should be pleased about the success of our investment in that it safeguards our future, but not complacent as we realize the restrictions on its accessibility. I hope this helps the members understand better our financial structure and goals. If you have questions, please feel free to call me, at your convenience, at 703–850-4077. I would be more than happy to discuss any of these financial issues with you.

Thank you,

Cary Gold, Treasurer

Information About Continuing Education

A Message from the Executive Director

Our Center offers many excellent programs and learning opportunities. These events frequently offer continuing education units (CEUs) to those who participate in them. For many of our members this is one of the most important components of their participation with WBCP.

The CEUs are available to licensed clinical social workers, psychologists, psychiatrists as well as licensed professional counselors. We are authorized to provide these CEUs through our affiliation with the American Psychoanalytic Association (APSA) and the American Psychological Association (APA). We regularly go through certifications and qualifications with these organizations to make sure we are

meeting the highest professional standards required by these professional licenses. The process to qualify to award CEUs to program participants starts months before the program is announced to the membership. Program managers need to gather information about the specific learning objectives which will be covered by the program. In general, each hour and learning objective qualifies for one CEU. Managers must gather academic articles and research that support the educational objectives.

A detailed programming document is then prepared describing not only the measurable academic achievements of the program but also narratives explaining what participants will be

Information About Continuing Education

able to learn through their participation. The Center staff often assists program managers with the completions of these forms. These complete applications must then be peer reviewed before they are sent to APsA.

Only once the program has been submitted to APsA, can the Center begin to publicize the event as offering CEUs to the wider membership. You may note at the bottom of our program flyers there is very specific language about the award of the CEUs. This is important as certain professionals look to fulfill their licensing requirements.

It is also a requirement of our accredited programs that a post-event survey needs to be completed before the Center can issue the

credit. These survey's are very important as they show the efficacy of the programming but also give us valuable confidential information that we can use to improve future programs. We are unable to issue CEUs to those who do not complete the surveys.

It is a rigorous process and it ensures that the quality of the programming we offer meets the high standards of the licensing authorities. The Center's registration system keeps a record of completed courses and the issuance of CEUs. If you are interested in putting on a program or have questions about your CEUs be sure to give the office a call so we can assist you.

Joe Chirico, Executive Director

Reds

New Directions Personal Essay

The shade of her lipstick is wrong. Scarlet is her trademark, but today she smirks in coral.

The color clashes with her dress. The dress she wore to my wedding, the one my sister and I searched for, the one we picked specifically for her. We chose it for the folds and shirring in just the right places to disguise the bulk lurking beneath. We made sure it had a high neckline to cover her chest wrinkles, that network of valleys and canyons carved deep into her skin. We found one with sleeves that were long enough to cover the fat that cascaded over her elbows. It was the dress we hoped would help my mother blend in with the rest of the wedding party, at least until she opened her red-lipped mouth.

Now it is the dress she will wear forever.

My husband, walking beside me, stops a few feet from the coffin, sensing my need to close the final distance alone.

I can't stop looking at those lips, caught up in the wrongness of them. But as I approach the coffin, it is the self-satisfied expression on her face that mesmerizes me.

Even in death, she mocks me.

The familiar, fiery nidus ignites at my core. But

this time it expands, oozing into all the empty spaces, under the deadbolted doors, through the hairline cracks in the barricades. It gathers itself, builds, then explodes.

My insides turn molten.

I am rooted at the side of the coffin, my skin aflame, my hands clenched.

She looks as if she is about to open her eyes into the judging slits I know so well. To draw those vermilion-colored lips back over her huge front teeth and toss her head back, opening that mouth to fill the room with her derisive laughter.

She'd do anything to win, including dying. Never give an inch. Winning is everything.

Her death closes the door, seals the deal, steals my last vestige of hope of hearing words I have waited a lifetime to hear. Words she spat back into my face. "Sorry? I'll never tell you I'm sorry." And then, with a harsh laugh. "Not. Ever."

Fury becomes my puppeteer. I raise my hand to slap the smug expression off her face.

Spousal intuition pulls my husband behind me. His arms encircle mine, holding me like a pre-

served butterfly, and he eases me away from the coffin.

When I was 13, she told me I was cold and distant, that no one would ever want to marry me, that I was unlovable. And I believed her. For decades, I believed her.

I lean back into my husband's chest and his arms slide down my sides until both of his hands hold both of mine.

Diane Birnbaumer, MD
Rancho Palos Verdes, CA
(Written for New Directions February 2023 weekend, *Poetry and Psychoanalysis*)

Member Announcements

Greta Carlson, Psy.D., presented her paper, "Translating Between the Abstract and the Concrete: Working Psychodynamically in the Psychiatric Hospitals of Today and Tomorrow," at Washington Hospital Center's Grand Psychiatry Rounds on July 28th, 2023. The paper, originally presented at Division 39 of the APA's 2021 Spring Meeting, explores how psychodynamic and systems-level thinking can be applied to shorter-term psychotherapy cases in the inpatient setting with children and adolescents. The paper can be accessed by clicking [HERE](#).

Tyger Latham, published three book reviews.

- Latham, T. (2023). [Review of the book *Masculinity and its Discontents: The Male Psyche and the Inherent Tensions of Maturing Manhood*, by M.J. Diamond]. *Journal of the American Psychoanalytic Association*, 71 (2): 354-359.
- Latham, T. (2023). [Review of the book *Sexuality Beyond Consent: Risk, Race, Traumatophilia*, by A. Saketopoulou]. *Journal of the American Psychoanalytic Association*, 71 (3): 550-555.
- Latham, T. (2023). [Review of the book *History Flows Through Us: Germany, The Holocaust, and the Importance of Empathy*, edited by R. Frie]. *The Psychoanalytic Quarterly*, 92 (3).

Jon Meyer's photographic portfolio, "Just Another Pretty Landscape," was published in *LensWork*, No. 163, June 2023, pp. 38-51. There is irony in the "pretty landscape" title in that the portfolio is a study of an industrial facility making wood products and

its impact on the surrounding land has not been pretty. *LensWork* is the premier publication for art photography. Sixteen of Jon's images are in the print edition, 17 in the tablet edition, and 27 in the extended computer edition. The link to the promotional pages is [HERE](#). Scroll down the page to see his sample images. His psychoanalytically-based photographic studies of the inner landscape of the mind, "In the Mind's Eye" and "Inner Darkness," were published in *FotoNostrum Magazine*, #13, March 5, 2021, pp. 70-85. The link to the sample page is [HERE](#). His "Inner Darkness" series was published by itself in *Black & White Magazine*, 155, 2022, pp. 108-111. The link to the spotlight portfolio and other of his images is [HERE](#). His website is www.jonmeyerphotographicart.com

Charlie Parks, along with colleagues **Karimah Edwards, Psy.D.** and **Kurt Ela, Psy.D.**, received the William Licamele, M.D. Distinguished Teacher Award for "outstanding performance and contribution to teaching in the MedStar Georgetown University Hospital Child and Adolescent Psychiatry Residency Training Program" for the 2022 - 2023 academic year.

Rick Waugaman, has several recent publications on Shakespeare. In the Shakespeare Oxford Newsletter: [Previously Unnoticed Biblical Echoes in The Tempest and in Hamlet](#) 'Back, friends' or 'Backe friends'

Little Musical Gift from IPA

Miles Davis: Time after Time

[Click Here](#)

In a new Routledge book:
[What Shakespeare Teaches Us about Psychological Complexity](#)

[Shakespeare's Sonnets Epilogue](#)

Rick edited a recent issue of Psychoanalytic Inquiry, contributing these pieces:

[Prologue](#)
[The Origins of Modern Literary Theory in the Repudiation of Autobiographical Readings of](#)

Meet the Year One PSP Students



Madeline Amberge

Madeline Amberge, MD, is a native of Pittsburgh, PA by way of New Jersey. She received her undergraduate degree in Cell Biology & Neuroscience at Rutgers University. After completing her medical degree at the Lewis Katz School of Medicine at Temple University, Madeline joined the Georgetown Department of Psychiatry as a resident in 2020. Madeline is currently a PGY4 resident and has served as the Chief Resident for medical education over the past 2 years. Her professional interests include medical education, psychotherapy, and women's mental health. Additionally, Madeline is an RYT-200 certified yoga instructor and is passionate about the mind-body connection and a holistic approach to well-being. In her spare time, she enjoys nature, live music, and her three pets.



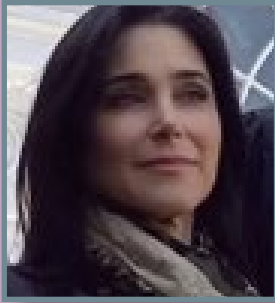
Celia Foster

Celia Foster, MD, was born in New Zealand and moved to Fargo, ND as a child. She attended Swarthmore College where she majored in Sociology and Anthropology. After two gap years, she matriculated at Emory for medical school where she met her husband (who is now also a psychiatrist) and then went to residency at Icahn School of Medicine at Mount Sinai Hospital in NYC. After graduating a few months ago, she moved to Maryland where she is currently working in the residential unit at Sheppard Pratt Hospital. She is very excited to start the PSP program and meet the staff and students at WBCP!



Michael Garcia

Michael (Mike) Garcia, LPC, has been treating children and adults in private practice as a licensed psychotherapist since 2006. His post graduate studies have been concentrated in British object relations theory and practice, including as a visiting student to the Tavistock institute and clinic in London, UK, in 2016. He has also published papers in the Journal of Child Psychotherapy. As an incoming student of the Washington Baltimore Center, he hopes to deepen his understanding of the clinical encounter, as well as his sense of community among analytically-minded colleagues. He lives and works in Charlottesville, Virginia.



Carola Goldenberg

Carola Goldenberg, MA, has over 20 years of experience in non-native language education. She has been teaching and coordinating Spanish language courses at the George Washington University since 2014. She also co-authored the textbook *Gente 4th Ed.: A task-based approach to learning Spanish*. Before moving to the US, Carola taught at the highest corporate and government levels in Europe, and was responsible for the design and production of curriculum development and evaluation courseware in 26 languages for different European Union agencies.

Carola's research interests are situated in instructed second language acquisition (ISLA). She focuses on non-native language students' subjectivity when faced with aspects of difficult knowledge through a curriculum based on sustainability and social justice.

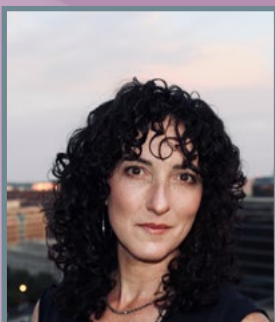
Carola started her career in Argentina as a bilingual translator and interpreter with a degree from the Emilio Stevanovitch's Interpreters' School. She then moved to the UK to continue her studies and earned a Master of Arts in Bilingual Translation from the University of Westminster and a Master of Arts in Applied Linguistics and Foreign Language Teaching from the University of Nottingham. She is currently completing her Education Doctorate in Curriculum Design and Instruction from the George Washington University.



Ella Juhyun Hong

Dr. Ella Juhyun Hong, is a Korean American psychiatrist practicing in Washington, D.C. She moved from South Korea in her middle school and has made Michigan her home state since the move. She stayed there to complete part of her psychiatry residency until coming to join the National Institute of Mental Health to finish her residency and to complete her fellowship in the field of behavioral endocrinology focusing on women's mental health. She is part of various research areas that study reproductive endocrine-related mood disorders such as premenstrual dysphoric disorder, postpartum mood disorder, and perimenopausal depression.

Along with the interest in working with women through life transitions, she has an interest in understanding the importance of culture and language in therapeutic treatments. She has continuously worked with various clinicians and community advocates to help understand various morphologies of mood disorder and anxiety in generations of the Asian community and to help seeking treatment when necessary. Dr. Hong is excited to be part of the upcoming class of the Psychoanalytic Studies Program and look forward to her journey with the Washington Baltimore Center for Psychoanalysis.

Catherine Wigginton
Greene

Catherine Wigginton Greene, MS, is a writer, educator, and documentary filmmaker deeply committed to strengthening human connection. She co-authored the novel *Rebecca, Not Becky* (HarperCollins: Dec 5, 2023), an exploration of friendship, motherhood, and race, and directed the feature documentary *I'm Not Racist... Am I?*, which follows a diverse group of teens and their families through a yearlong exploration of race and racism. She screens the film nationwide, using it as a tool to spark community dialogue, and has developed curricula and workshops to accompany the film so that viewers can connect more deeply with its subject matter.

Catherine's previous work includes producing the documentary *In 500 Words or Less*, following four teens through the fraught college admissions process, as well as the *Adopted: We Can Do Better* video series which aims to shed light on the experiences of children of color raised by white parents.

Catherine grew up in Denver; earned a BA in history and Spanish from Coe College; an MS from Columbia University's Graduate School of Journalism; and is currently pursuing her doctorate at George Washington University's Graduate School of Education with a focus on difficult dialogue. She lives in DC with her husband, three daughters, and puppy PJ.



Preet Kaur

Preet Kaur (she/her/hers) is a Licensed Professional Counselor (LPC), working in private practice in the DC metropolitan area. She has a Master's degree in Counseling Psychology and is currently a doctoral candidate in the Counseling department at George Washington University. Preet has been in clinical practice for about eight years, working with diverse clinical populations in varied settings, including community mental health agencies, college counseling centers, a psychiatric hospital, group practice, and her private practice. She has provided individual, group, and couples psychotherapy across these settings. Her approach to psychotherapy is grounded in a dynamically informed, relational, and multicultural orientation. In her practice, she seeks to situate clients' narratives in a culturally relevant context, believing every therapeutic encounter is cultural.

Preet strives to balance providing direct clinical services with conducting applied mental health research and engaging in community-based efforts (through writing, presentations, or other advocacy efforts) involving mental health care for minoritized or otherwise marginalized communities.

Preet is excited to join the WBCP as a member of the incoming class of PSP. Over the years in practice, she has found herself returning repeatedly to a keen interest and desire to develop a depth of understanding of psychoanalytic training and technique.



David J Miranda

David J. Miranda, PhD, is a clinical psychologist in private practice at the MindWork Group in Baltimore, MD. He completed his doctorate at UCLA and an interdisciplinary postdoctoral fellowship in Adolescent Medicine at the University of Maryland School of Medicine. David has conducted psychological assessment, consultation, and therapy in a number of settings in the greater Baltimore area and Severna Park. He also conducted social marketing and communications research for the Medicare Program. David's current practice focuses on intensive individual psychotherapy, but also includes couples, family and group therapy. He has an interest in social support, resilience and the development of cultural, gender and sexual identity. He likes to spend his free time swimming, traveling and spending time with his husband, dog and cat.



Mary Eliza Reilly

Mary Eliza (Molly) Reilly, MSW, LICSW, is a psychotherapist in private practice, working with individual adults and couples. She completed her MSW at the University of Pennsylvania in 2017. After graduation, she worked at the Meyer Treatment Center, and opened a private practice in 2021. Molly is a graduate of the Fundamentals of Psychodynamic Psychotherapy program and the Clinical Program in Psychodynamic Psychotherapy at the Washington School of Psychiatry. Molly has worked in the past as a family caregiver and as a trainer and strategist in the women's human rights movement. She is the mother of a 28-year-old daughter and lives in Washington, DC.



Jenny Yung

Jenny Yung, MD, is a born and bred New Yorker from Queens, N.Y. Growing up in an urban setting, attending public schools, and working at her parents' Chinese take-out restaurant exposed her to a diverse range of cultures and mindsets. She was drawn to thinking about how people think, prompting her to major in psychology at Amherst College, followed by pursuing a career in psychiatry. After attending New York Medical College for her medical degree, she completed her psychiatric residency at the Zucker Hillside Hospital in Glen Oaks, N.Y. She has long held an interest in psychodynamic principles and is excited to learn from the PSP and apply the principles to her clinical work.

Since moving to Alexandria, V.A. in 2015, she has worked in outpatient psychiatry and primarily focused on psychopharmacology. Currently she is the psychiatrist for the Arlington County Behavioral Health Division's first episode psychosis program and contracts with a D.C. based private practice.

In her spare time, Jenny enjoys running, experimenting with new recipes, throwing dinner parties, karaoke, exploring theme parks with her 10-year-old son, and hiking with her husband. She has also been involved in local activist efforts to support the establishment of universal healthcare.

2023 Graduation & Awards Photos





**Washington Baltimore
Center for Psychoanalysis**

2120 L Street, NW, Suite 600-1
Washington, DC 20037

DC Phone: 202-237-1854
MD Phone: 410-792-8060
Fax: 410-792-4912

Follow Us

